


SAFETEA-Lu

Safe, Accountable, Flexible, Efficient Transportation Equity Act: A Legacy for Users



On August 10, 2005, President Bush signed **SAFETEA-Lu**. Authorizes the Federal surface transportation programs for highways, highway safety, and transit.

\$252.6 billion authorized over 5 year (2005-2009)

- **Federal-aid Highways - \$201.6 Billion 80%**
- Public Transportation - \$45.2 B
- Highway & Motor Vehicle Safety - \$5.8 B


Surface Transportation Authorization 2

Legislative Actions

- SAFETEA-Lu Authorization 2005
 - This **BILL** authorized FHWA to continue the Federal Aid Highway program. **No Funds** are included in the **BILL**. (meaning: Contract Authority)
- DOT funding Obligation **BILL** (Appropriations) –
 - Each year Congress passes funding **BILLS** to obligate funds for use.
 - This is done by other committees than those that create the Authorization **BILL**

Surface Transportation Authorization 3

Highway Trust Fund



Federal-aid Highway Act of 1956

- ✓ Established **Trust Fund** to collect revenue to pay for the authorizations
- ✓ Appropriations Bills draw in the Trust Fund

SAFETEA-LU

- ✓ **Extended authorizations for FY 2005 to 2009**
- ✓ **Extended Trust Fund through FY 2011**

Surface Transportation Authorization 4

SAFETEA-Lu


Safe, Accountable, Flexible, Efficient Transportation Equity Act: A Legacy for Users

Federal-aid Highway Program Funding, 2005-2009

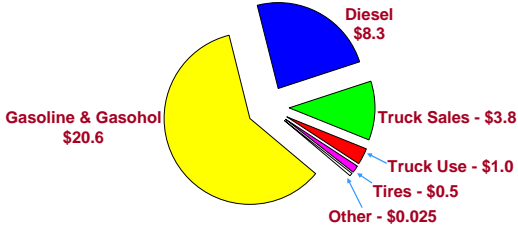
Area	Billions
Interstate Maintenance	\$25.2
National Highway System (NHS)	30.5
Bridge	20.4
Surface Transportation Program	32.5
Congestion Mitigation & Air Quality	8.6
Highway Safety Improvement	5.1
Federal Lands	4.5
Research	2.3
Other	72.5

SAFETEA-Lu Reauthorization 5

Highway Trust Fund Receipts



Highway Account – FY 2006



Total 07 Receipts = \$34.3 Billion

How much are we spending???

6


SAFETEA-Lu

Safe, Accountable, Flexible, Efficient Transportation Equity Act: A Legacy for Users

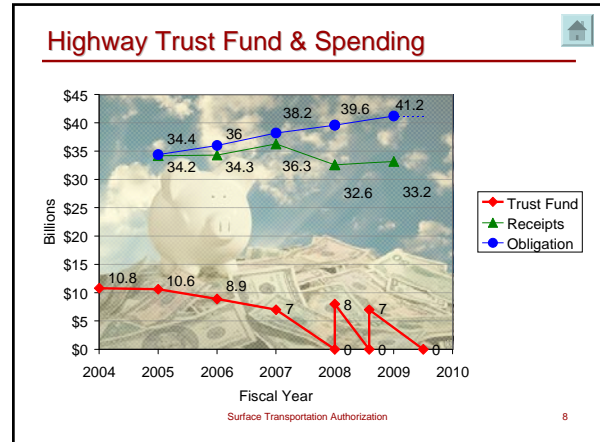
Federal Aid Program of \$201.6B with Highway Obligation Limitations (OL)

Year	2005	2006	2007	2008	2009
OL	\$34.422 Billion	\$36.032	\$38.244	\$39.585	\$41.200

Source: <http://www.fhwa.dot.gov/safetealu/>



SAFETEA-Lu Reauthorization 7



Transportation & Infrastructure Committee

June 22nd 2009 Mark-up of the BILL (775 pages)

Surface Transportation Authorization Act of 2010

- 2 ½ years of hearings, 100+ hours, 200+ witnesses
- Six year \$450 billion with \$337.4 billion for highways
 - 37% Increase in highway spending over FY2009 SAFETEA-LU
 - Establish a Council on Intermodalism
 - **Performance Driven** with Benchmarks
 - National Strategic Plan for Surface Transportation
 - Streamlining of existing Programs
 - Expediting Program Delivery



Transportation and Infrastructure Committee

SAFETEA-Lu Extension Proposals

- Senate Bill (S. 1489) – providing for an 18 month extension of SAFETEA-LU
- \$26.8 billion proposal to fund the 18 month extension of SAFETEA-LU
 - Resume earning interest on Trust Fund
 - \$19.5 billion in “lost” earnings since 1998
 - \$ 7.3 billion return of trust funding appropriated to cover emergency relief activities

12

FY10 Continuing Resolution (CR)

- Highway Trust Fund Fix for FY09 \$7 billion General Fund transfer
- Short-term fix Oct 1st 2009 - Continuing Resolution to SAFETEA-LU
 - President signed 31-day extension for SAFETEA-LU
 - Action did not repeal \$8.7B rescission requirement



Highway Trust Fund Future?

- ✓ Administration position... no increase in gas tax
- ✓ For now, Congress approved a continuing resolution (H.R. 2996) that keeps the government funded through December 18, 2009.
- ✓ Congress could early next year, take up a surface transportation reauthorization bill (\$450 billion in road and transit funding, etc.)
- ✓ Uncertain whether an 18 month extension (March 2011) of SAFTEA-LU is still possible.



Surface Transportation Authorization

Guiding Principles

- Increased State **Flexibility**
- Narrower/Deeper Federal Role
- **Simplification** of Federal Programs
- Decisions based on **Performance**
- Encouragement of Innovation
- Encourage Flexible Funding Methods
- Environmental Concerns (sustainability)
- Empowering Customers



Ray LaHood
Secretary



Victor Mendez
Administrator



Jeff Paniati
Executive Director

Authorization & Recovery Act

HMA INDUSTRY

- Changing Designs with increased traffic and loadings
 - ex. MEPDG, super-singles, perpetual pavements
- Environmental Concerns (sustainability)
 - ex. Carbon dioxide reductions, increase in recycled materials
- Performance Measures tied to Funding
 - ex. Greater use of PMS, IRI measure
- Supply sources (asphalt, polymers, aggregates)
 - ex. Escalating materials costs, new materials
- Accelerating Technology Innovations
 - ex. WMA, improved performance testing, intelligent compaction
- Staff reductions & Shifting roles
 - ex. Better training delivery, QC/QA responsibilities

SAFETEA-Lu Reauthorization

16

Thank You.....

- FHWA, SAFETEA-Lu
 - <http://www.fhwa.dot.gov/safetealu/>
- The Commission, SAFETEA-Lu Report
 - <http://www.transportationfortomorrow.org/information/>
- AASHTO, Financing
 - <http://finance.transportation.org/?siteid=64&pageid=2648>
- ARTBA, Reauthorization
 - http://www.artba.org/tmaw/reauthorization_update.htm
- America's Transportation Network, Reauthorization
 - www.americatransportationnetwork.com
- NAPA, SAFETEA-Lu & Reauthorization
 - http://vocusgr.vocus.com/grspace2/WebPublish/controller.aspx?SiteName=NAPA&Definition=Home&XSL=Home&SV_Section=Home

SAFETEA-Lu Reauthorization

17