

2019 Southeastern Asphalt User/ Producer Group Conference

November 19, 2019

Christopher P. Knotts, P.E.
Chief Engineer

DOTD Responsibilities

- DOTD has a broad range of responsibilities that include rail (6 Class 1 railroads), mass transit, aviation (69), flood control (NFIP coordinator, flood control program and numerical models), dam safety (539), ports (39) and waterways (17).
- DOTD's revenues come primarily from federal revenue (45%) and State revenue generated by transportation-related taxes and fees (55%).
- The Department has approximately 4,260 personnel and an annual budget of \$1.9 billion.

Highways

ROADWAY ASSETS

16,660

miles of roadway

938

miles of interstate

5 billion+ truck vehicle miles annually

10th



Largest highway system in U.S.



National Rankings:

8th worst highway system pavement condition

5th highest fatality rate

2 regions in the top 10 most congested medium-sized urban areas (New Orleans and Baton Rouge)

Bridges



4,831
locally-owned

12,788
BRIDGES

7,957
state-owned

By the Numbers:

3rd worst structurally deficient bridges nationwide

1,145 load posted bridges

3,368 timber bridges

760 bridges 50 years or older

Essential Maintenance Operations

357 thousand acres
mowed annually



60,700 cu. yd.
of litter removed



over **947** buildings
and **10** rest areas



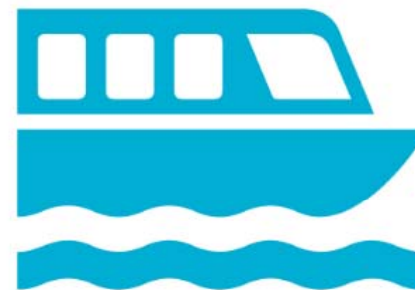
3,000+
highway-rail crossings



3,350
traffic signals

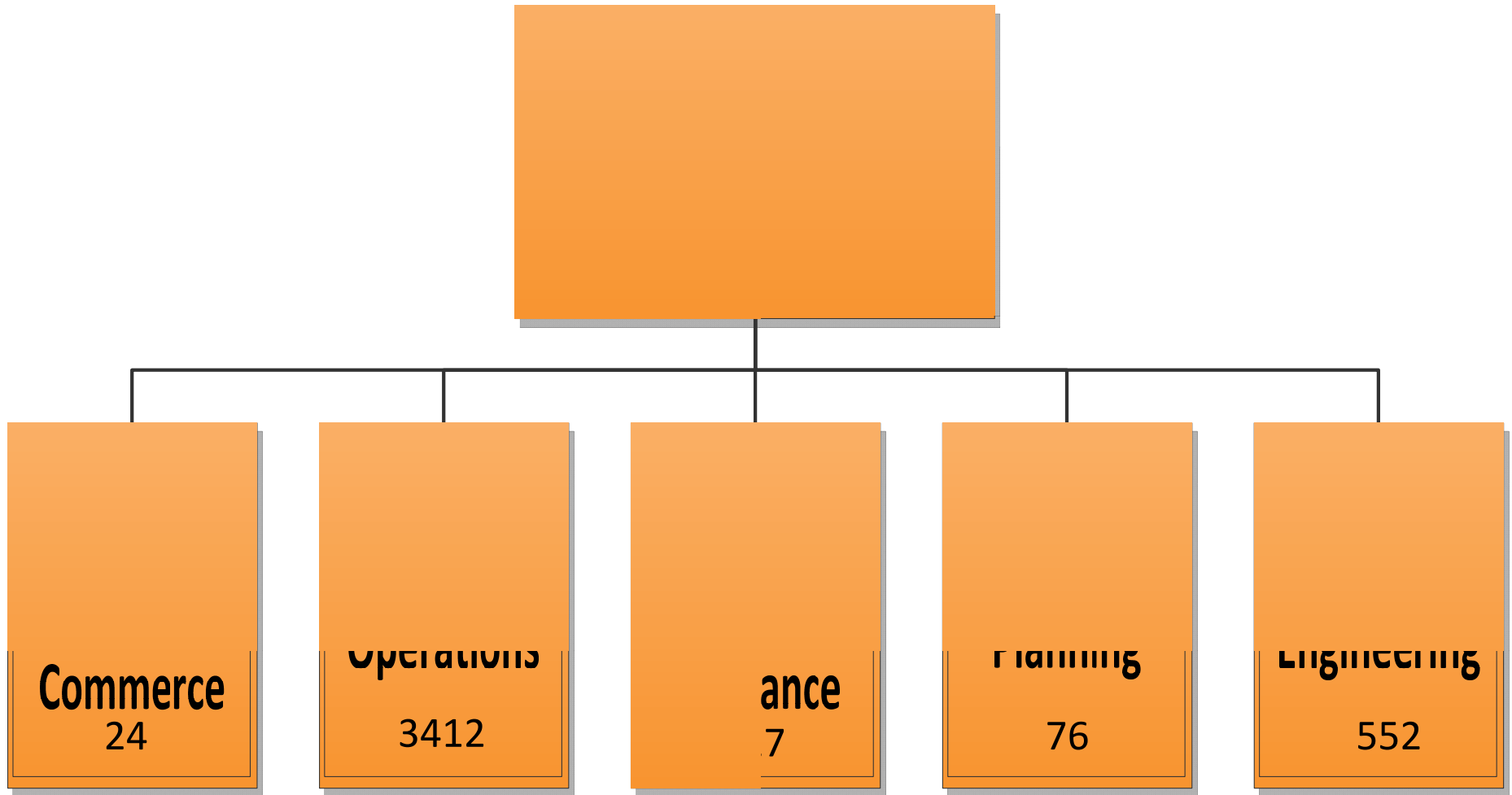


1 million +
traffic signs



4 ferry service
locations

Six Offices of DOTD



Office of Engineering

- Environmental
- Project Management
- Real Estate
- Research
- Materials Testing
- Training and Technology Transfer
- Location and Survey
- Road Design
- Bridge Design
- Traffic Engineering
- Pavement and Geotechnical
- Contract Services
- Construction
- Public Works & Water Resources
- Innovative Project Delivery

LTRC - Research

- The Research Section is a cooperative endeavor between LA partner universities and LA DOTD created by legislation in 1986. A combination of in-house experts and university personnel create the ability for LTRC to adequately tackle research topics identified by all sections of LA DOTD. In addition, in-house experts serve in a technical assistance capacity to quickly respond to problems as they arise in the field.
 - Materials Research
 - Pavement & Geotechnical Research
 - Special Studies Research
 - External Programs Research

LTRC - Technology Transfer and Training

- Comprised of three units, Structured Internal Training, External Programs & Publications, and Local Technical Assistance Program
- Train DOTD, local government, and industry employees in the areas of construction, maintenance, leadership, and technology using the most up-to-date, work-related training programs and materials for the purpose of disseminating practical knowledge to the transportation industry at large.
 - Transportation Training and Education Center
 - Federally mandated Construction Certification Program
 - Conferences
 - Editing and Newsletters

Budget Partition FY 2019-2020

➤ System Preservation/Sustainability	\$380 M
➤ Operations/Motorist Services	\$ 52 M
➤ Safety	\$ 61 M
➤ Additional Capacity	<u>\$ 0 M</u>
Sub-total	\$493 M
➤ Quality of Life/Local Public Assistance	
➤ Transportation Alternatives Projects	\$ 4 M
➤ Intermodal Connectors	\$ 15 M
➤ Congestion Mitigation/Air Quality	\$ 6 M
➤ Federal & State Earmarks/Miscellaneous	\$ 21 M
➤ Road Transfer	\$ 21 M
➤ Other Local Public Assistance	<u>\$ 71 M</u>
Sub-total	\$138 M
➤ GARVEE Construction and Debt Service	\$184 M
➤ P3 Construction	<u>\$125 M</u>
Sub-total	\$309 M
Grand Total	\$940 M

Budget Sub-Partition

System Preservation

➤ Pavement Preservation (non-Interstate)	\$ 160 M
➤ Pavement Preservation (Interstate)	\$ 76 M
➤ Bridge Preservation (on-system)	\$ 131 M
➤ Bridge Preservation (off-system)	<u>\$ 13 M</u>
TOTAL	\$380 M

Progress

- Since 2016, we have invested \$2.6 Billion dollars in 1,215 projects
- GARVEE Bond Program Launched in 2019
 - \$650 million for selected projects.
 - First series was sold in April 2019 - \$185,000,000, 12-year level debt; additional GARVEE bonds will be issued to cash flow the GARVEE projects, with the next series expected in 2021
- With an aggressive/creative approach to secure funding, we have advanced a number of projects that move Louisiana transportation forward
 - LA 23, the State's first Public Private Partnership is in ongoing negotiations
 - I-220/Barksdale AFB interchange, constructing a new entrance into BAFB broke ground May 2019. Roadway construction will start in early 2020
 - The I-10 Loyola Interchange project, which broke ground in early October, will be one of two Diverging Diamond Interchanges in the State

Thank You!